

Applications

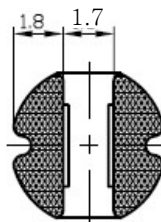
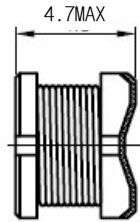
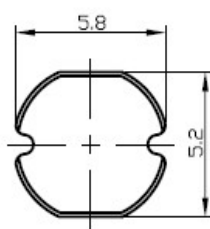
- Automotive Electronics
- LED Drive Module
- Buck, Boost & Forward Converter Etc.
- Noise Filtering Chokes

Picture

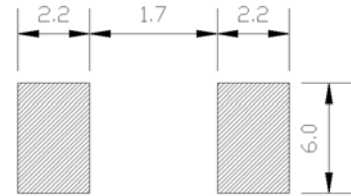
Environmental data

- Operating temperature range : -40°C to +125°C (Including self-temperature rise)
- Storage temperature range : -40°C to +125°C

Dimensions [Unit : mm]



Land Pattern [Unit : mm]



Specifications

Part No.①	L(uH)②	DC Resistance(mΩ)③		I _{sat} (A)④	I _{rms} (A)⑤
		TYP	MAX	TYP	TYP
KOU5845S-2R2M	2.2		35		3.80
KOU5845S-3R3M	3.3		45		3.30
KOU5845S-4R7M	4.7		60		2.80
KOU5845S-6R8M	6.8		75		2.10
KOU5845S-100M	10.0		80		1.44
KOU5845S-120M	12.0		95		1.40
KOU5845S-150M	15.0		105		1.30
KOU5845S-180M	18.0		120		1.20
KOU5845S-220M	22.0		185		1.10
KOU5845S-270M	27.0		220		0.97
KOU5845S-330M	33.0		290		0.88
KOU5845S-390M	39.0		330		0.80
KOU5845S-470M	47.0		480		0.72
KOU5845S-560M	56.0		550		0.68
KOU5845S-680M	68.0		600		0.61
KOU5845S-820M	82.0		660		0.58
KOU5845S-101M	100.0		770		0.52
KOU5845S-121M	120.0		915		0.48
KOU5845S-151M	150.0		1170		0.40
KOU5845S-181M	180.0		1664		0.38
KOU5845S-221M	220.0		1940		0.35
KOU5845S-331M	330.0		2390		0.30
KOU5845S-102M	1000.0		5200		0.17

Remarks

- Inductance Tolerance : N → 30%, M → 20%
- Test frequency : at 100KHz, 1.0Vrms
- DC resistance : Reference ambient temperature 25°C
- I_{sat} : Maximum allowable DC current is that which causes a 30% inductance reduction from the initial value (Reference ambient temperature 25°C)
- I_{rms} : DC current for an approximate temperature rise of 40 °C without core loss.
Temperature rise is highly dependent on many factors including P.C.B land pattern, trace size, and proximity to other components.
Therefore temperature rise should be verified in application conditions.
- Quantity/reel : 1,500 PCS

*All specifications are subject to change without notice.

www.inductor.co.kr